

eDTR™ Software Installation Guide



Table of Contents

Running the Installer	2
Installation.....	2
Registration.....	6
Activation	7
Verification	10

Running the Installer

Insert the eDTR™ Flash Drive into the PC's USB slot. If autoplay is enabled and allows the autorun feature to launch automatically, you will be taken **directly to Installer**. If autoplay is not enabled, then open a File Explorer windows to the USB drive and run the eDTR.exe application (See Figure 1).

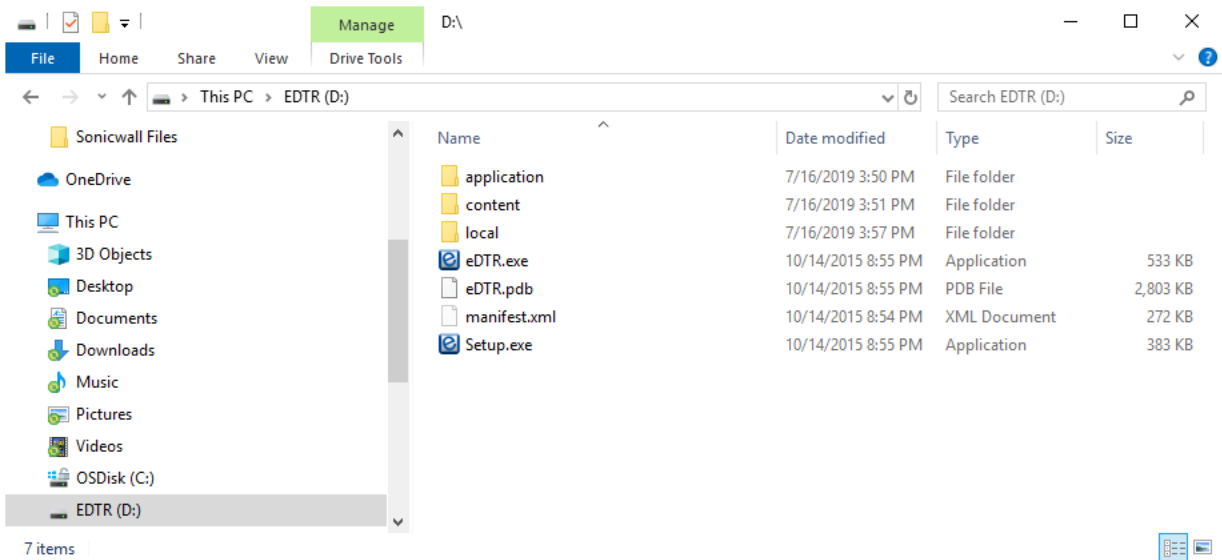


Figure 1 Windows 10 Explorer Window

Double click the  **eDTR.exe** to launch the eDTR™.

Installation

You will see the following dialog box (Figure 2) only when launching the eDTR™ from the Flash Drive using a variation of the previous steps or by inserting the drive into the PC.

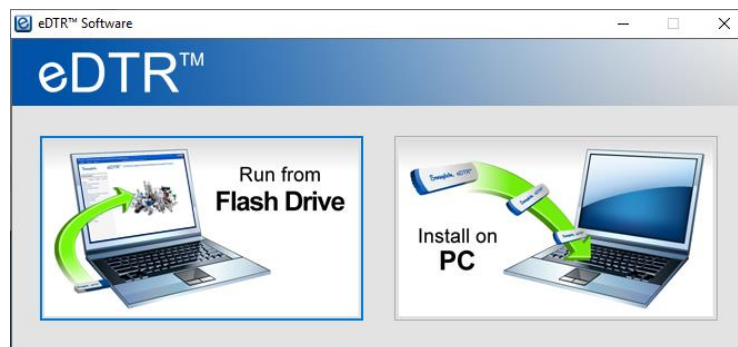


Figure 2 Windows 10 Flash Drive Launch Window

1. Click the button “**Install on PC**” to continue with installing the eDTR™.

2. You will be taken to the eDTR™ Setup Wizard which will guide you through the remainder of the installation process.
3. **Note:** On Windows 10 **User Access Control** will prompt the user when software needs to be installed since it is considered a change to the system. Depending on the exact configuration of the machine, a dialog box like below (Figure 3). This typically appears whenever you have to install or change the configuration of a PC.

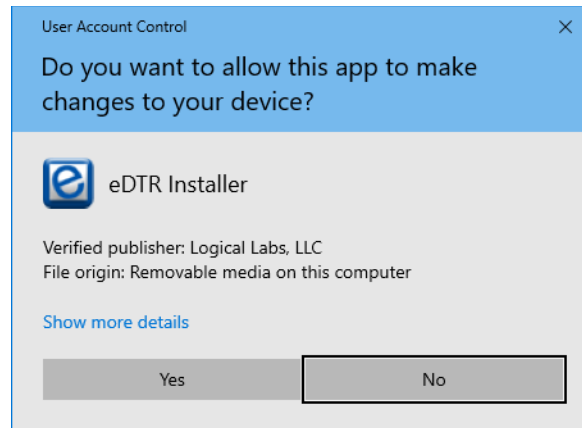


Figure 3 Windows 10 UAC Window for eDTR™ Setup

- a. **Note:** The visual appearance and behavior of the eDTR™ Setup Wizard and other eDTR™ windows are for the most part nearly identical between Windows 7 and 10 so each platform will not be shown unless there is a difference worth noting. Clicking the **Next** button will advance the install screens.

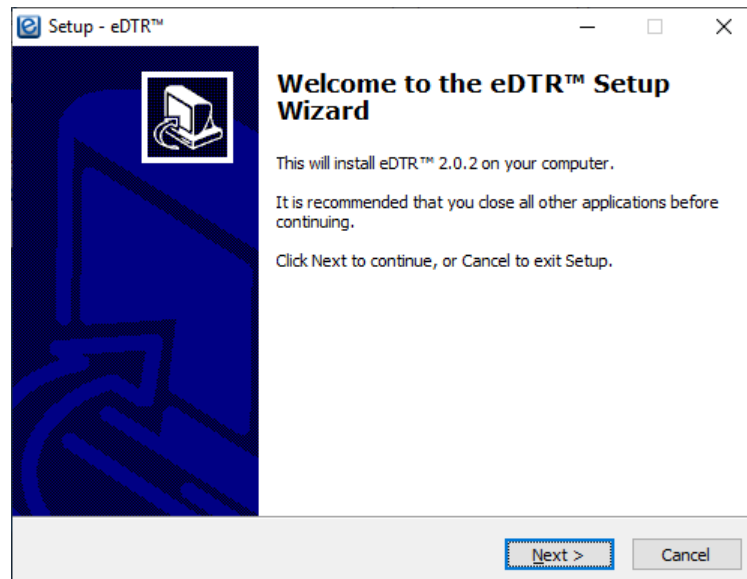


Figure 4 eDTR™ Setup Wizard Initial Step

4. Decide if desktop icon should be created and click the **Next** button.

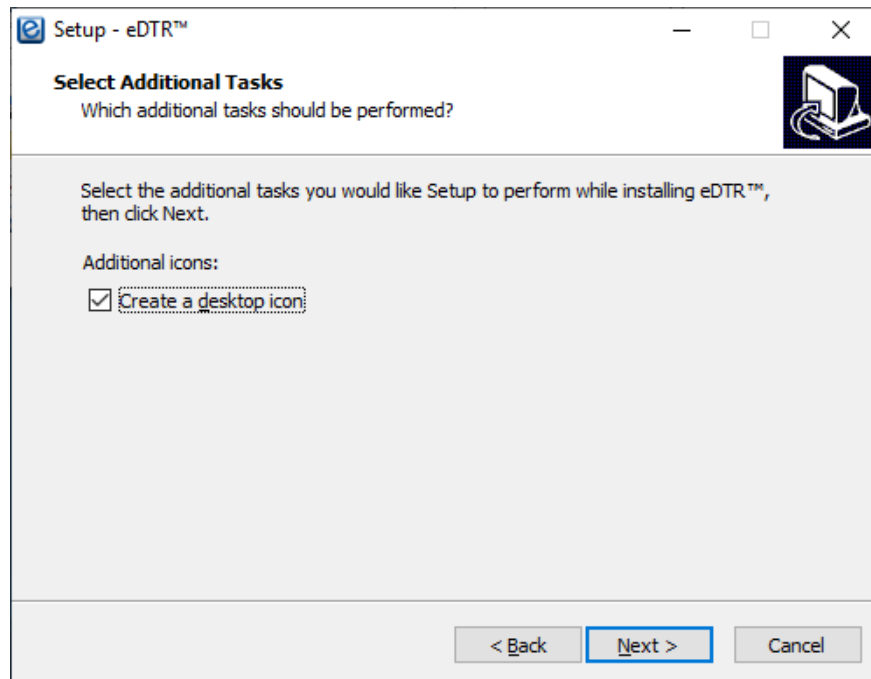


Figure 5 eDTR™ Setup Wizard Additional Tasks Step

5. Click the **Install** button.

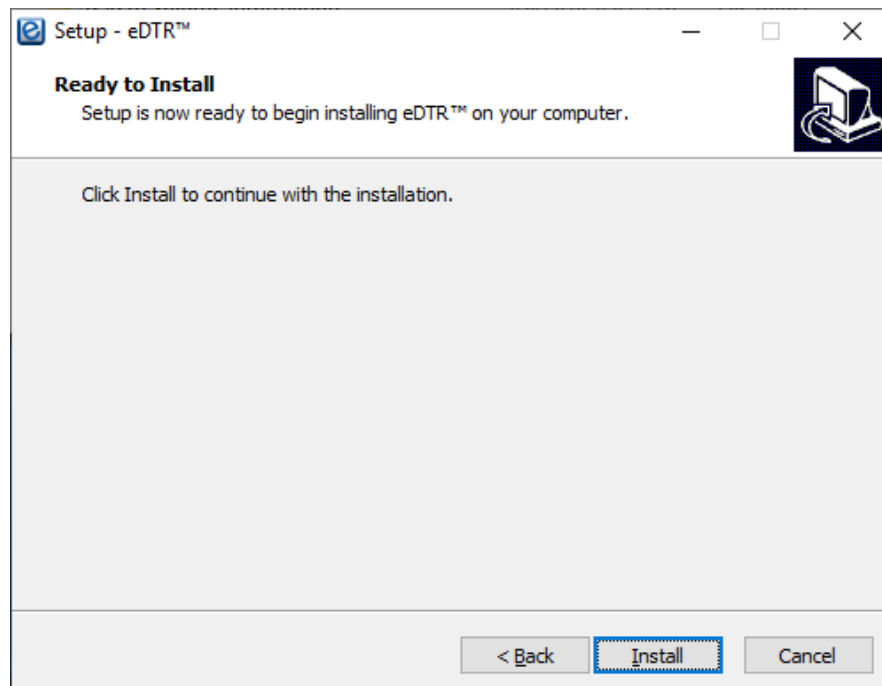


Figure 6 eDTR™ Setup Wizard Ready to Install Step

6. The installation process will take a few minutes to complete installation of the contents.

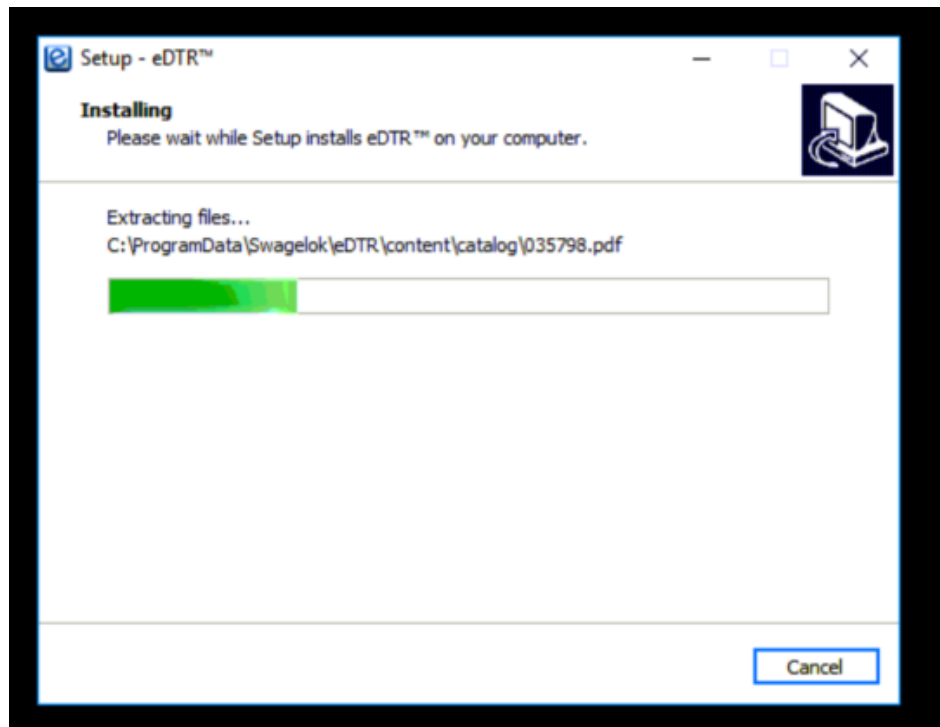


Figure 7 Windows 10 Installing Step

7. When you see the screen below, the installation of the software and catalog contents have been installed. If you wish to continue from here directly to registering and activating the new installation, leave **Launch eDTR™** checked. Click the **Finish** button.

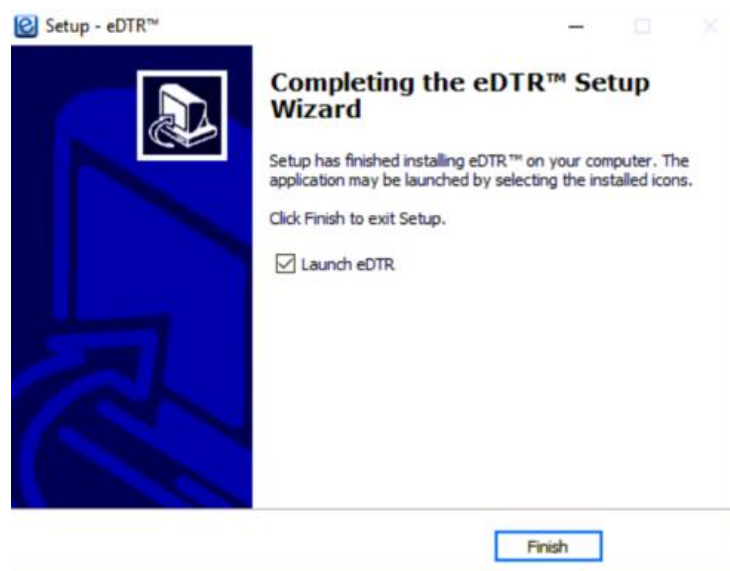


Figure 8 eDTR™ Setup Final Step

Registration

When the eDTR™ is run for the first time or anytime while it is not registered and activated, it will prompt you with a registration dialog box.

1. The Swagelok location will be automatically defined with the appropriate distributor unless your distributor is part of a collection of distributors with the same Swagelok code. In these cases, you will use the pull down menu to select the appropriate location. See **Figure 9** and **Figure 10** to see the difference between a single distributor and a multiple distributor option.



eDTR™ Registration

Enter or confirm information is correct. Click Activation to continue.

Swagelok location: Swagelok Northern California

Your company:

Your name:

Your email:

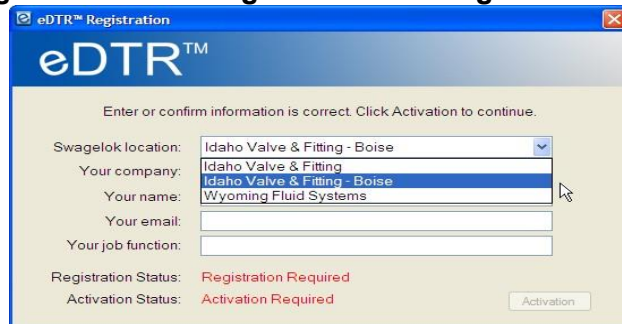
Your job function:

Registration Status: Registration Required

Activation Status: Activation Required

Activation

Figure 9 eDTR™ Registration for Single Distributor



eDTR™ Registration

Enter or confirm information is correct. Click Activation to continue.

Swagelok location: Idaho Valve & Fitting - Boise

Your company:

Your name:

Your email:

Your job function:

Registration Status: Registration Required

Activation Status: Activation Required

Activation

Figure 10 eDTR™ Registration for Multiple Distributor Option

2. Continue completing the remaining registration fields. The email address used must be a valid email address in order to receive the activation email required to complete activation of eDTR™.
3. The Activation button will not be enabled until all fields are entered. Once completed, click the **Activation** button.



eDTR™ Registration

Enter or confirm information is correct. Click Activation to continue.

Swagelok location: Swagelok Northern California

Your company: Streamline Software Solutions

Your name: John Pataki

Your email: john.pataki@streamline-ss.com

Your job function: Consultant

Registration Status: Registration Required

Activation Status: Activation Required

Activation

Figure 11 eDTR™ Registration Completed

Note: If there no Internet connection available, the registration information will be saved but you will not be able to activate the software. There must be an Internet connection so the activation process can continue. The eDTR™ software cannot be used until it is properly activated.

Activation

When the eDTR™ is run for the first time or anytime while it is not registered and activated, it will prompt you with the following registration dialog box.



Figure 12 eDTR™ Activation Window

1. Within a few minutes, you should receive an email like the one below.

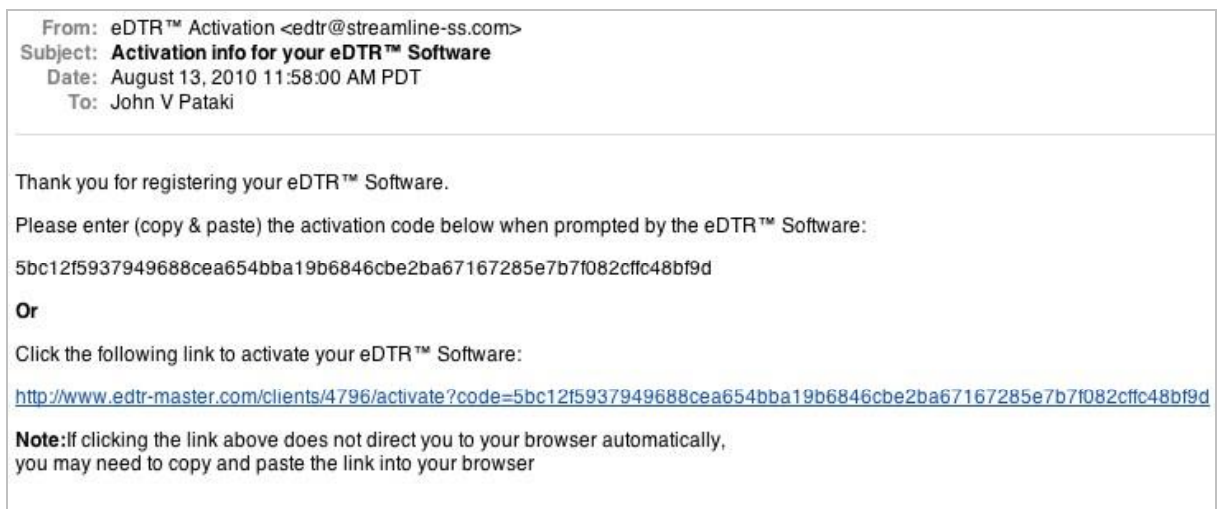


Figure 13 Sample eDTR™ Activation Email

2. You can either use the link provided in the email to activate the eDTR™ directly on the server or you can copy and paste the code directly into the activation form.
3. Clicking the link in the email (or copying pasting the link into your web browser directly) will produce an activation page like the one below. You can then proceed by clicking the **Verify Activation** button on your eDTR™ Activation window.

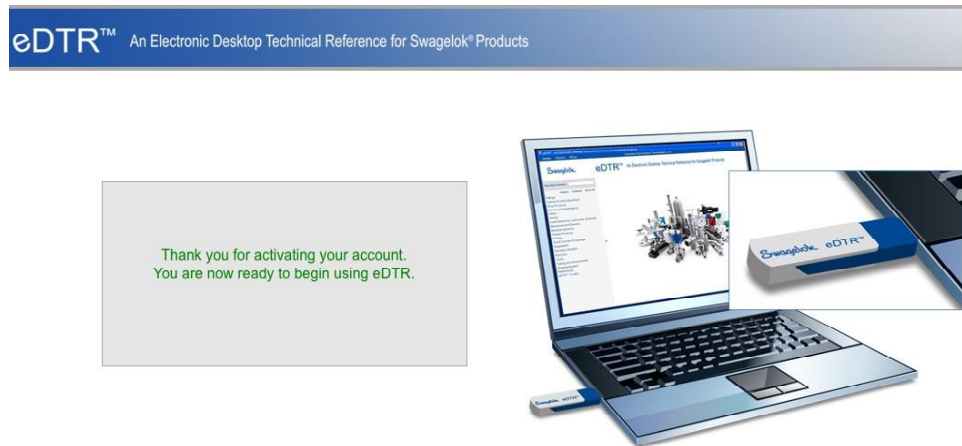


Figure 14 Activation Page After Link Clicked

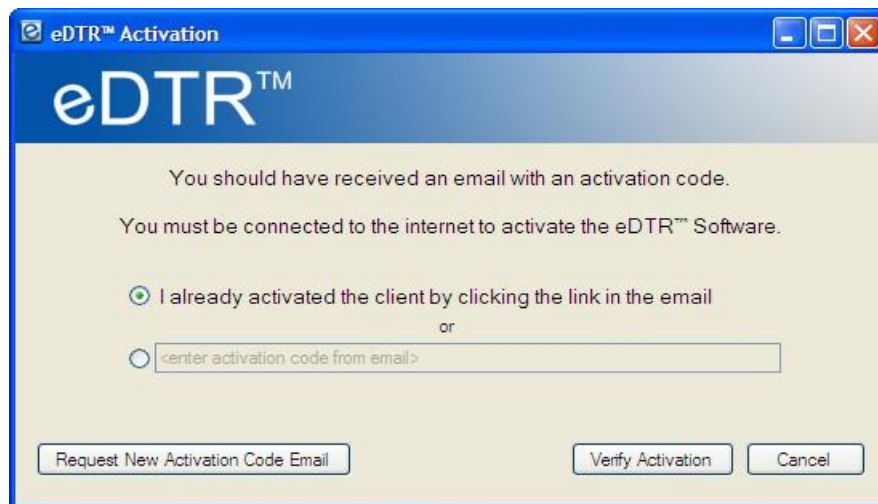


Figure 15 eDTR™ Activation

- a. **Optionally**, if you did not activate via the link in your web browser, you can copy and paste the code directly into the Activation dialog box and then click the **Activate** button to continue.

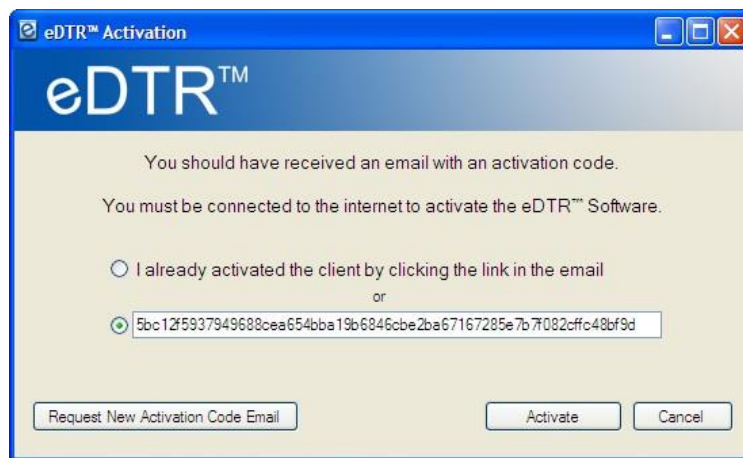


Figure 16 eDTR™ Activation Copying Code from Email

4. When the activation is complete, you will receive the dialog box shown below (Figure 17). To continue to use the eDTR™ click the Restart button to restart the eDTR™. This will only restart eDTR™, not your computer. Otherwise you can click Close to end.

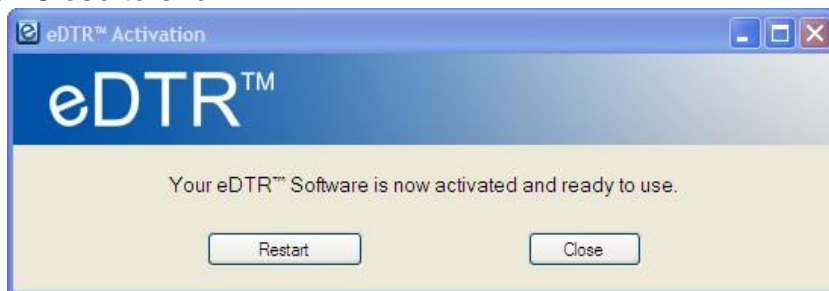


Figure 17 eDTR™ Activation Successful

Verification

After installing, you may wish to verify that the eDTR™ is installed and has the required PDF viewing dependencies installed. If you clicked Restart from the last step, you can proceed to step 2.

1. To run the eDTR™ from the All Programs Menu, select Swagelok, eDTR™

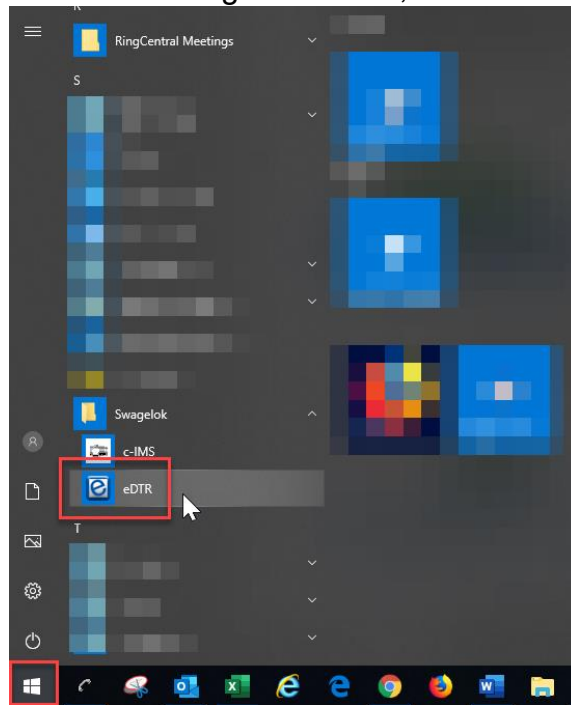


Figure 18 Windows 10 Start Menu Item for eDTR™

2. Selecting the eDTR™ menu item will launch the eDTR™ and you should see the main interface if a valid PDF viewer is installed and configured correctly for the eDTR™.

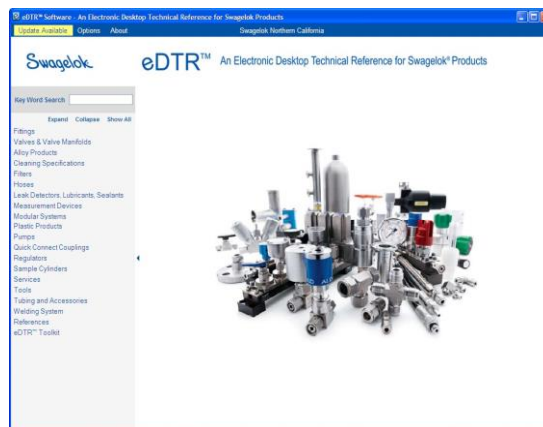


Figure 19 eDTR™ Software Running & Ready

3. To verify the eDTR™ registration information is now saved with the installation as expected, click the About menu item in the top menu bar.



Figure 20 Selecting About Menu Item

4. If you see information in the about page similar to the screenshots below, then everything is installed and working correctly. **The installation process is complete.**



Figure 21 Windows 10 eDTR™ About Page Details

If you encounter any issues with the installation, please contact us.